



## *July-August 2019 Summer Newsletter*

### *Welcome Victoria D'Amore*



The Kane Team is pleased to introduce you to our newest Maintenance Account Manager, Victoria D'Amore. Victoria has proven herself in the landscaping industry with over 15 years of experience and has already proven to be a great asset to our team.

As our company continues to grow, we want to ensure we continue to provide a high level of supervision and oversight for your home's landscape maintenance. Victoria will be helping our clients in the Vienna and Oakton areas.

As we want this transition to be seamless for you, Victoria will be reaching out to you via e-mail and phone at the beginning of July to set up a meeting with you at your home.

---

### *Making Old New Again*

The homeowners of this charming Arlington home had recently purchased the house and completed a full interior renovation. Once the interior was complete the homeowners turned to Emily Ingles at Kane Landscapes for an overhaul of the exterior.



In the front, the clients wanted to replace their existing driveway that was falling apart and increase space for their cars. In addition, they wanted to update their walkways to the front door and the back yard. The overgrown plants needed to be replaced with a well thought out pallet of plants that would provide more curb appeal and color.

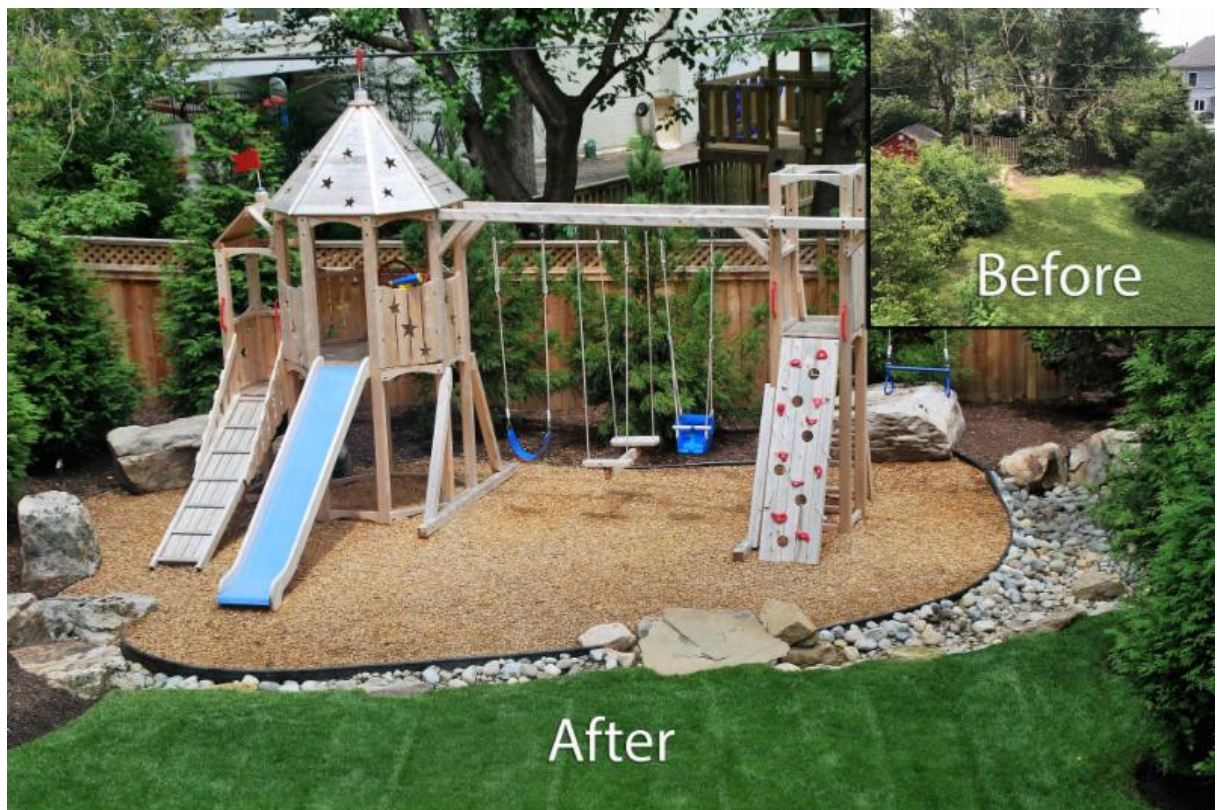


With two small children, the clients were looking to get rid of the overgrown jungle the backyard had become and create a fun, safe place for the whole family to enjoy. First, the old deck did not have great flow or function so they wanted to replace it with a two story addition with an open space on top and a screened porch below. Not only does the screened porch provide a shaded and a bug free zone for the family, it also includes fans and heaters to extend the usable seasons. The porch and deck were constructed using

a modern gray/blue and white color scheme to tie into their style and the new house facade.



Next, Emily had to address some safety issues including the steep drop off from the existing concrete patio to back lawn, the retaining walls that were failing, and the old fence that was broken in several areas. Similar colored masonry retaining walls, paver steps and boulders work seamlessly together to solve these issues by creating a terraced spaces that allow for easy transition from one level to the next. A beautiful new cedar fence was also installed to provide a safe and private area for the kids to play.



The kids are loving the new space and particularly enjoy playing on their new swing set,

climbing on the boulders, and running across their "troll" bridge. Our clients recently had a memorial day family gathering and had plenty of space for entertaining. They were so satisfied with the final product that they have now hired Kane to maintain this property as it continues to grow.

If you are looking to add a bit of interest to the front (or any other part) of your home give us a call. Our team of talented Landscape Architects is ready to help you enjoy your time outdoors!

## *Summer Watering Tips*

- Lawns need about one inch of water per week (including precipitation). Use a can or rain gauge to determine the amount of water applied by sprinkler system or from rainfall.
- Apply water only when needed. Too much water can cause diseases.
- One simple test to determine if lawn needs water is to walk on the lawn. If you leave footprints, it is time to water.
- A good soaking once or twice a week is better than watering every day. Allowing the soil to dry between watering will allow the roots to grow to greater depths and help make turf more drought tolerant.
- Water in the early morning (4 a.m. to 8 a.m.).
- Do not water during midday hours when it is hot and sunny to avoid scalding the turf.
- Do not water at night because the lawn stays wet for a longer period of time which can promote diseases.
- If you have a sprinkler system, set the system to turn on for three 10 minute sessions with each session 1/2 hour apart to improve water infiltration and reduce runoff.



## *Landscape Calendar & Tips*



### July

- Apply Grub Control

### August

- 3rd Tick Control Application


- 2nd Tick Control Application
- 2nd Fungicide Application
- Continue Weekly Mowing
- Continue Bi-Weekly Weeding
- Continue 1st Round Pruning & Plant Fertilization
- 3rd Fungicide Application
- Continue Weekly Mowing
- Continue Bi-Weekly Weeding
- Begin Aeration, Seeding, and Fall Fertilizer
- 2nd Round Pruning & Plant Fertilization Begins

---

*Contact Us Today!*

---

Kane Landscapes, Inc | Phone: (703) 803-3146 | Fax: (703) 698-0958 |  
P.O. Box 650369 Potomac Falls, VA 20165-0369  
*info@kanelandscapes.com | www.kanelandscapes.com*

 Like us on Facebook

Featured on  houzz